

Series	MK-IR		MK-IRS		MK-LR	
Model	MK-IR-E19 MK-IR-E25 MK-IR-E35 MK-IR-E50	MK-IR-Q25 MK-IR-Q35 MK-IR-Q50	MK-IRS-E19 MK-IRS-E25 MK-IRS-E35 MK-IRS-E50	MK-IRS-Q25 MK-IRS-Q35 MK-IRS-Q50	MK-LR-E19 MK-LR-E25 MK-LR-E35 MK-LR-E50	MK-LR-Q25 MK-LR-Q35 MK-LR-Q50
Detector	Uncooled VOx Microbolometer					
Resolution/Pixel Pitch	384x288/12μm	640x512/12μm	384x288/12μm	640x512/12μm	384x288/12μm	640x512/12μm
Objective Lens (F1.0)	19/25/35/50mm	25/35/50mm	19/25/35/50mm	25/35/50mm	19/25/35/50mm	25/35/50mm
Field of View	13.9° ×10.4° / 10.6° ×7.9° 7.5° ×5.7° / 5.3°×4.0°	17.6° ×14.1° / 12.6° ×10.1° 8.8° ×7.0°	13.9° ×10.4° / 10.6° ×7.9° 7.5° ×5.7° / 5.3°×4.0°	17.6° ×14.1° / 12.6° ×10.1° 8.8° ×7.0°	13.9° ×10.4° / 10.6° ×7.9° 7.5° ×5.7° / 5.3°×4.0°	17.6° ×14.1° / 12.6° ×10.1° 8.8° ×7.0°
Visual Magnification	2.09~8.37 / 2.75~11.01 3.85~15.41 / 4.82~19.26	1.61~6.45 / 2.26~9.03 2.82~11.29	2.09~8.37 / 2.75~11.01 3.85~15.41 / 4.82~19.26	1.61~6.45 / 2.26~9.03 2.82~11.29	2.09~8.37 / 2.75~11.01 3.85~15.41 / 4.82~19.26	1.61~6.45 / 2.26~9.03 2.82~11.29
Laser Indicator (IRS)	/		650nm   Class II   Range >100m		/	
Spectral Band	8~14μm					
Eyepiece Diopter	-5~+5					
Eye Relief	20mm					
NETD	≤ 25mk@300K					
Display	0.39" OLED 1024x768					
Digital Zoom	1x、2x、4x					
Frame Rate.Hz	50Hz					
Protection Rating	IP67					
Measuring Distance	/				1200m	
Power Source	3400mAh Li-ion Battery					
Standby Time	≥ 5h					
Interface	External Power/ Type-C					
Weight (Without Battery)	≤ 470g				≤ 515g	
Dimensions	196×70×58mm				196×70×90mm	
Operating Temperature	-20℃ ~+50℃					
Detection Range (Human)	19mm/1800m 25mm/2370m 35mm/3310m 50mm/4730m					
Detection Range (Animal)	19mm/1590m 25mm/2090m 35mm/2920m 50mm/4730m					

COMPANY PROFILE

Chengdu Jingpin Night Vision Optoelectronics Technology Co., Ltd. (JPNVision), a subsidiary of Vital Optics Technology Co., Ltd. (Stock Code: SZ 300489), specializes in pioneering infrared thermal imaging technology. We offer a wide array of products, from infrared cores and thermal imaging modules to night vision and visual perception devices, catering to a global clientele alongside tailored solutions. Leveraging cutting-edge proprietary technology and a commitment to customer satisfaction, JPNVision represents the forefront of industry innovation. We are devoted to enhancing human sensory experiences and shaping a new era in the world of perception.

- +86 400-661-8812
- JPNVision@votinfrared.com
- en.jpnvision.com
- 9th Floor, Building E, Technology Incubation Park, 1480 North Section of Tianfu Avenue, Gaoxin District, Chengdu, China



DEALER



FACEBOOK



LINKEDIN

\*The above data and content are for reference only. In case of any changes or adjustments, no further notice will be given. The actual product shall prevail. All the content on this screen/page should not be construed as the benchmark parameters upon product delivery or as an implication of the product's usage effect.



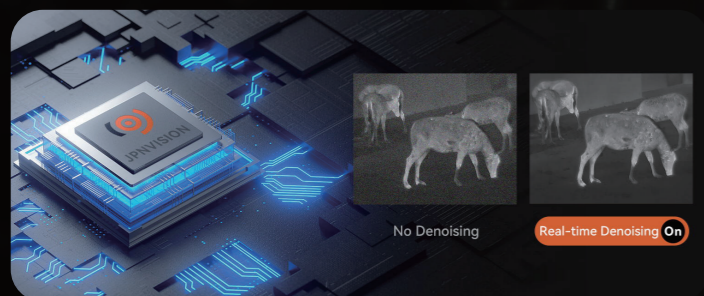
BOUNDLESS OUTDOOR  
EXPLORATION WITHIN YOUR REACH



MK Series Thermal Imaging Monocular



## Shutterless



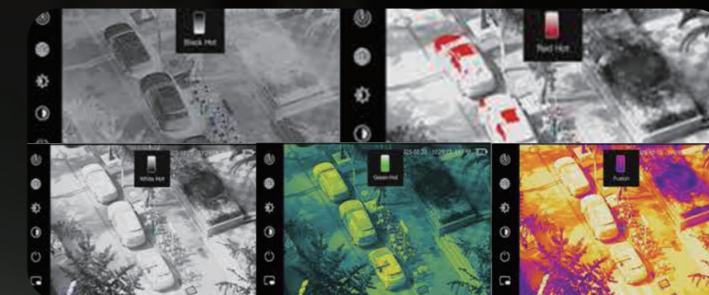
## Real-time Denoising



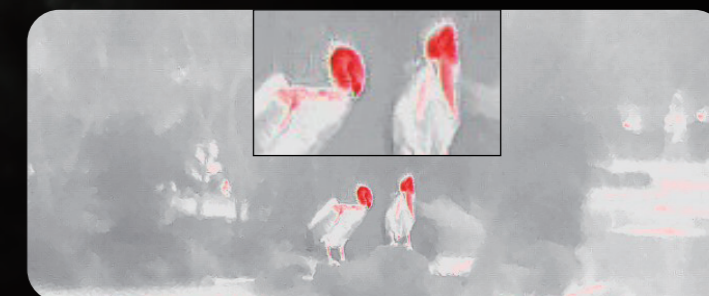
## Laser Ranging 1200m



## WiFi Transmission



## 5 Kinds of Palettes



## Picture in Picture



## Hot Track



## IP67